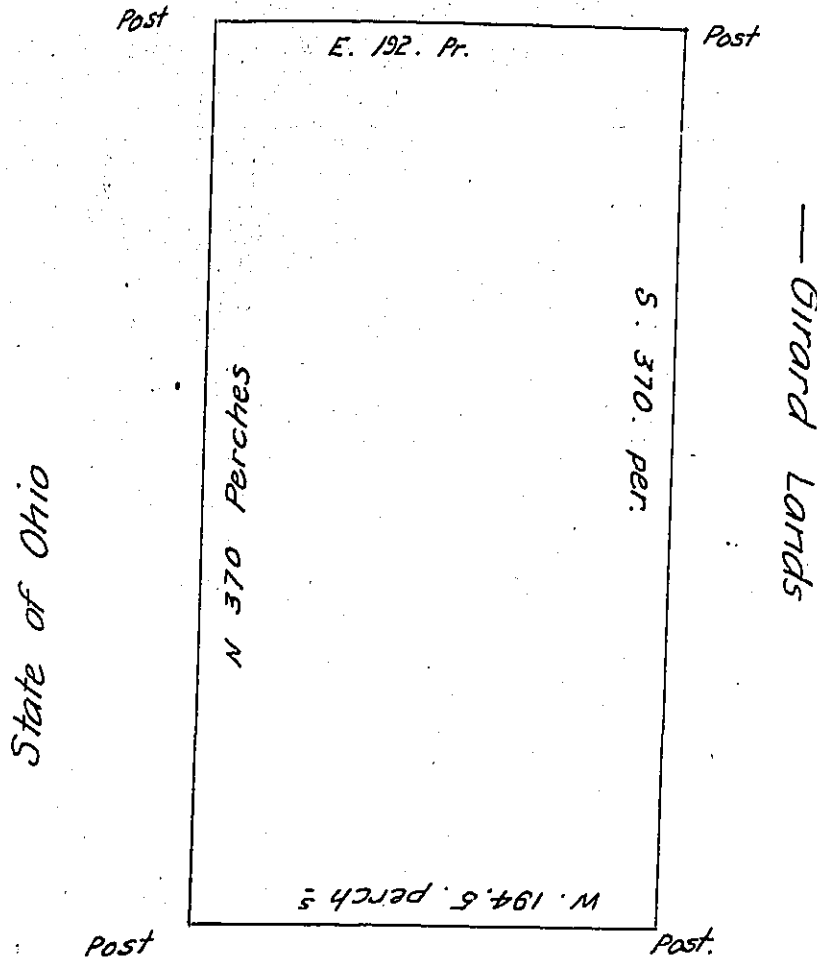


Morgan

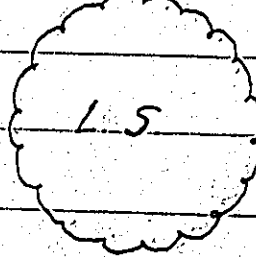


A draught of a tract of Land Situate in Conneautt Township Erie-on the waters of Conneautt Creek. Surveyed on the 27th day of September 1836 for Jesse P. Harmon by virtue of his actual

settlement and improvement Containing Four hundred & twenty two acres and ninety three perches and allowance of six per cent for roads &c.

S. Skinner D.S.

Erie County S.S.



I hereby certify from the Books and Documents in the Deputy Surveyor's Office for the County aforesaid it appears that the above described tract of land is not otherwise appropriated than to the said Jesse P. Harmon and said land has been improved four

years Given under my hand & seal the 29th day of September

A.D. 1836

S. Skinner D.S.

John Taylor Esq.

S. G.

IN TESTIMONY that the above is a copy of the original remaining on file in the Department of Internal Affairs of Pennsylvania, made conformably to an Act of Assembly approved the 16th day of February, 1833, I have hereunto set my Hand and caused the Seal of said Department to be affixed at Harrisburg, this thirteenth day of March 1905

Isaac P. [Signature]
Secretary of Internal Affairs.